



# AIG-1 Polyclonal Antibody

<b>Catalog No</b>	YP-Ab-03684
<b>Isotype</b>	IgG
<b>Reactivity</b>	Human;Rat;Mouse;
<b>Applications</b>	WB;ELISA
<b>Gene Name</b>	AIG1
<b>Protein Name</b>	Androgen-induced gene 1 protein
<b>Immunogen</b>	The antiserum was produced against synthesized peptide derived from human AIG1. AA range:196-245
<b>Specificity</b>	AIG-1 Polyclonal Antibody detects endogenous levels of AIG-1 protein.
<b>Formulation</b>	Liquid in PBS containing 50% glycerol, 0.5% BSA and 0.02% sodium azide.
<b>Source</b>	Polyclonal, Rabbit,IgG
<b>Purification</b>	The antibody was affinity-purified from rabbit antiserum by affinity-chromatography using epitope-specific immunogen.
<b>Dilution</b>	Western Blot: 1/500 - 1/2000. ELISA: 1/40000. Not yet tested in other applications.
<b>Concentration</b>	1 mg/ml
<b>Purity</b>	≥90%
<b>Storage Stability</b>	-20°C/1 year
<b>Synonyms</b>	AIG1; CGI-103; Androgen-induced gene 1 protein; AIG-1
<b>Observed Band</b>	32kD
<b>Cell Pathway</b>	Cell membrane ; Multi-pass membrane protein .
<b>Tissue Specificity</b>	Highly expressed in heart, ovary, testis, liver, and kidney, at lower levels in spleen, prostate, brain, skeletal muscle, pancreas, small intestine and colon, and undetected in peripheral blood leukocytes, thymus, lung and placenta. AIG1 expression is higher in hair follicles from males than from females.
<b>Function</b>	function:May play a role in androgen-regulated growth of hair follicles.,induction:By dihydrotestosterone (DHT).,similarity:Belongs to the AIG1 family.,tissue specificity:Highly expressed in heart, ovary, testis, liver, and kidney, at lower levels in spleen, prostate, brain, skeletal muscle, pancreas, small intestine and colon, and undetected in peripheral blood leukocytes, thymus, lung and placenta. AIG1 expression is higher in hair follicles from males than from females.,
<b>Background</b>	function:May play a role in androgen-regulated growth of hair follicles.,induction:By dihydrotestosterone (DHT).,similarity:Belongs to the AIG1 family.,tissue specificity:Highly expressed in heart, ovary, testis, liver, and kidney, at lower levels in spleen, prostate, brain, skeletal muscle, pancreas, small intestine and colon, and undetected in peripheral blood leukocytes, thymus, lung



and placenta. AIG1 expression is higher in hair follicles from males than from females.,

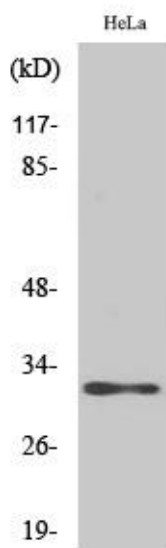
**matters needing attention**

Avoid repeated freezing and thawing!

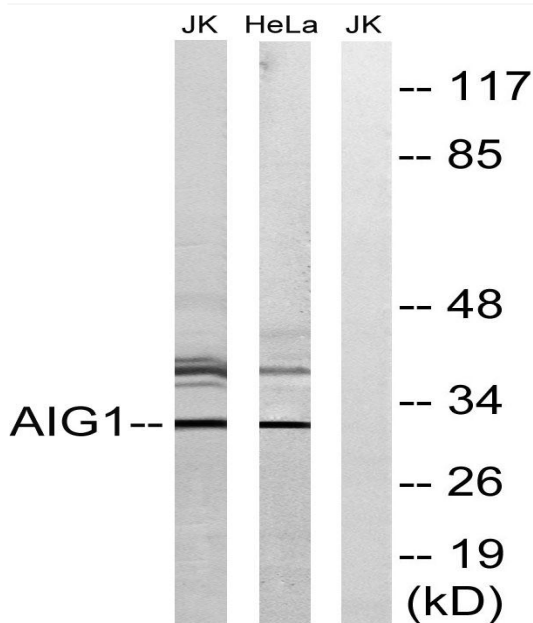
**Usage suggestions**

This product can be used in immunological reaction related experiments. For more information, please consult technical personnel.

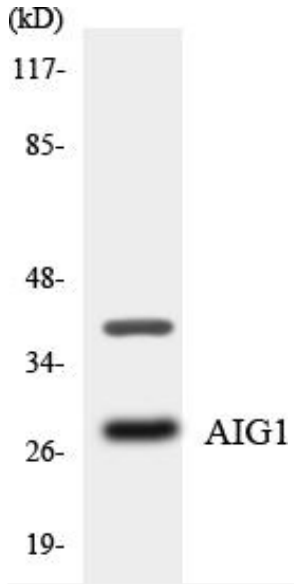
**Products Images**



Western Blot analysis of various cells using AIG-1 Polyclonal Antibody



Western blot analysis of lysates from HeLa and Jurkat cells, using AIG1 Antibody. The lane on the right is blocked with the synthesized peptide.



Western blot analysis of the lysates from HT-29 cells using AIG1 antibody.